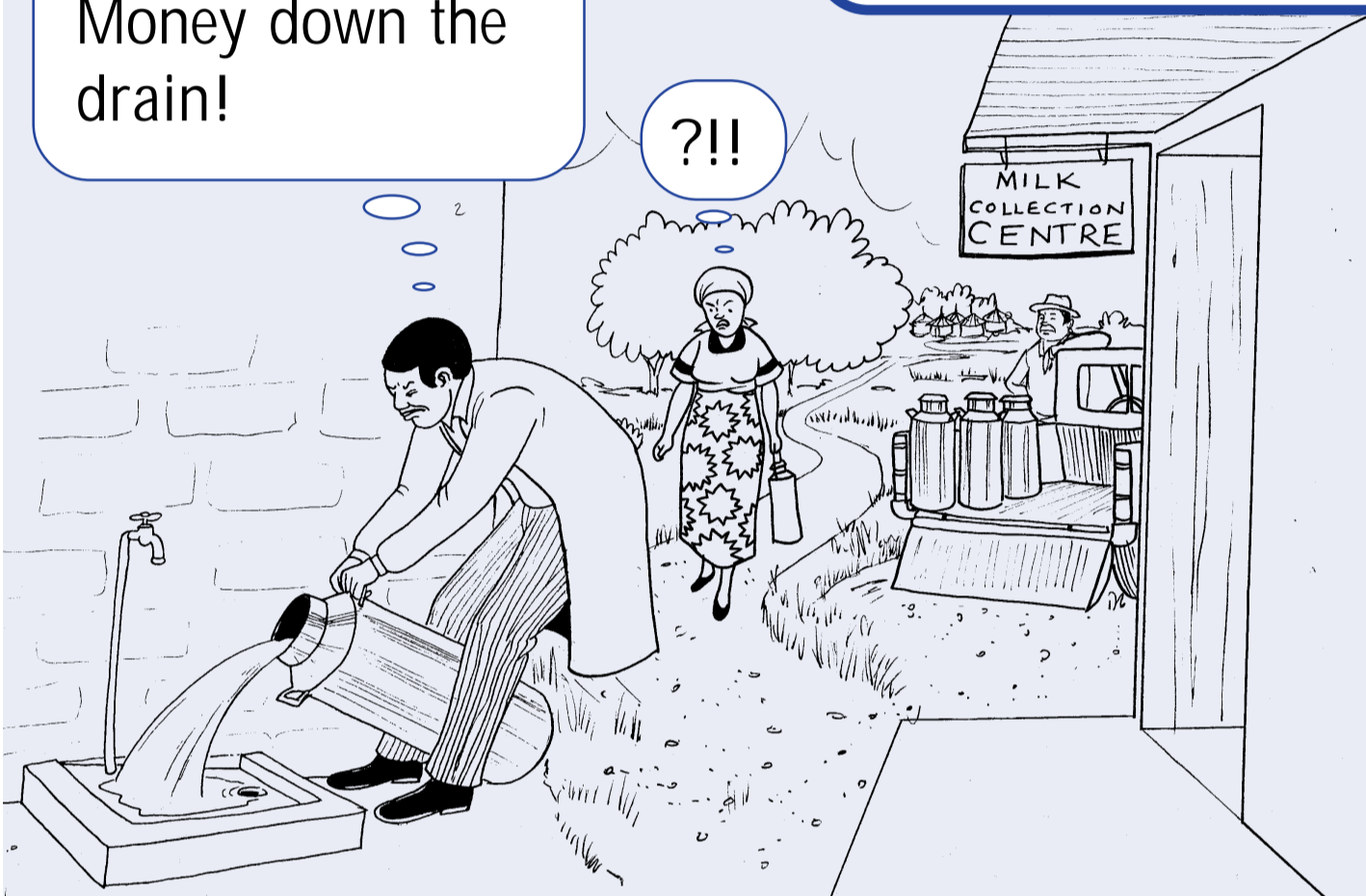


STOP MILK WASTAGE!



Do you waste milk due to spoilage and are your farmers unable to sell their evening milk? There is a solution...

More spoilt milk!
Money down the drain!



Why are you wasting all that milk?



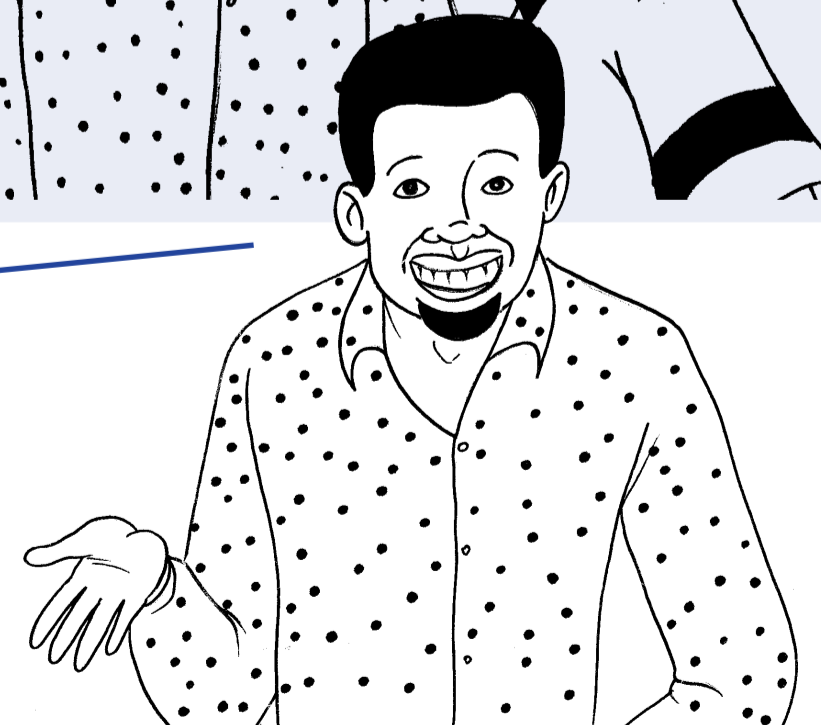
It's spoilt. Markets are far, roads are bad, evening milk is not collected, there's no electricity to keep it cool. Milk keeps going bad and we keep losing money.



There's now a solution to keep milk fresh for longer - its called LPS.



...the LPS method **NATURALLY** extends freshness for about 15 hours. You can now collect evening milk!



LPS is a natural milk preservative available for use at milk collection centres
CONTACT YOUR PROCESSOR FOR FURTHER DETAILS