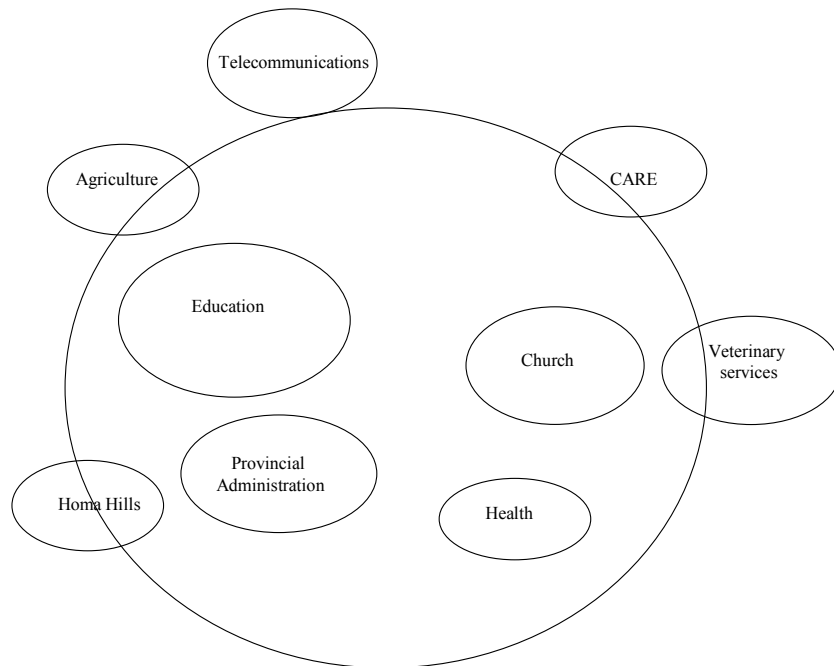
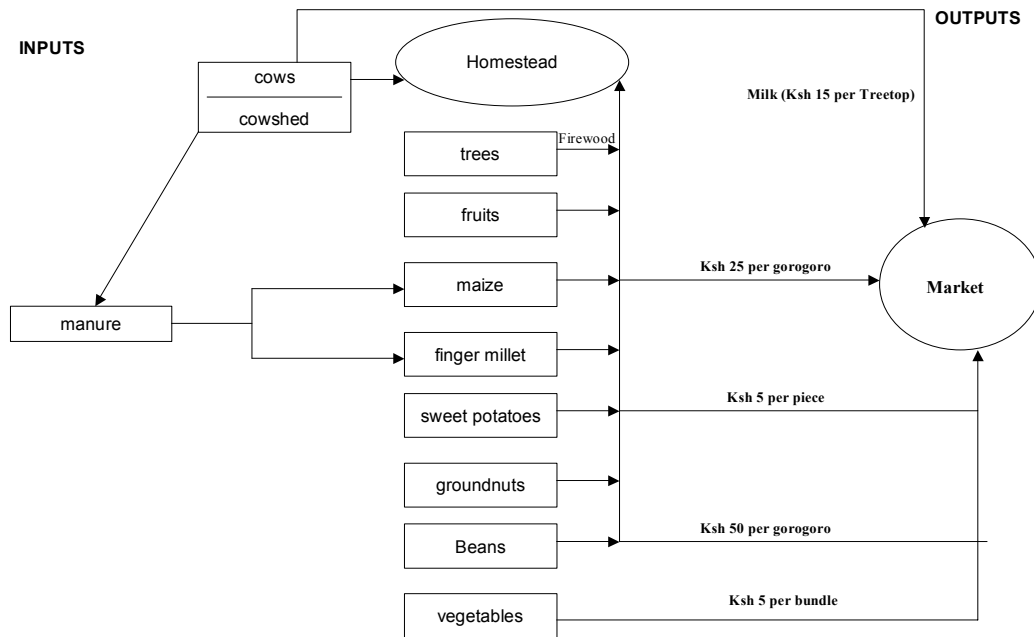
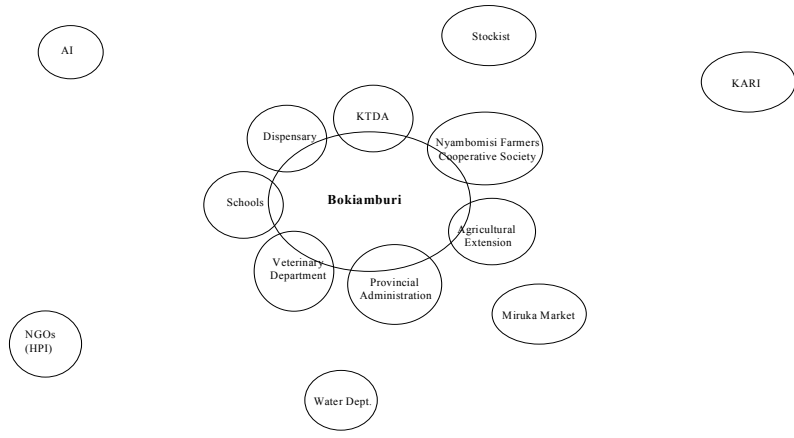
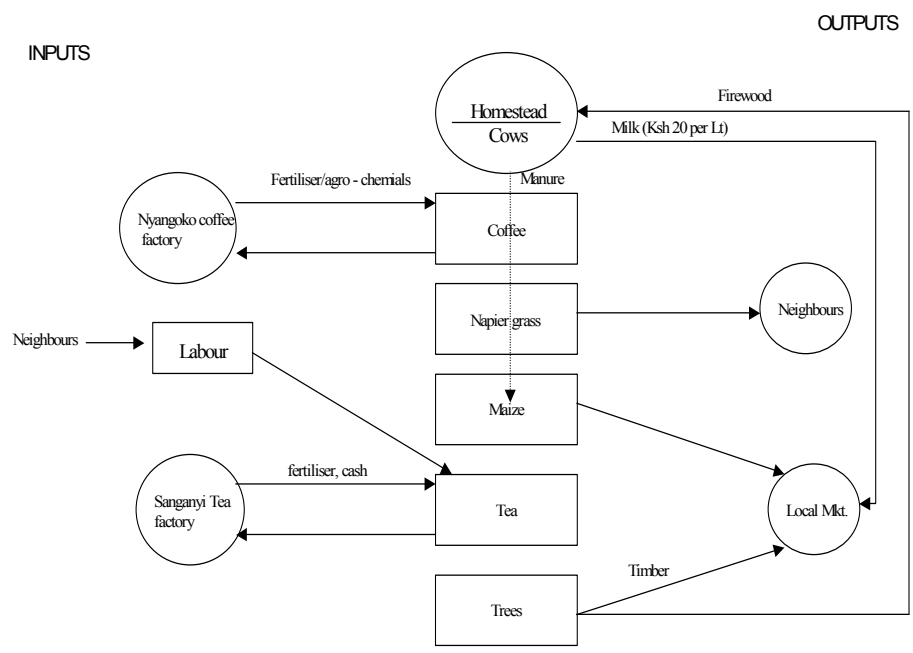


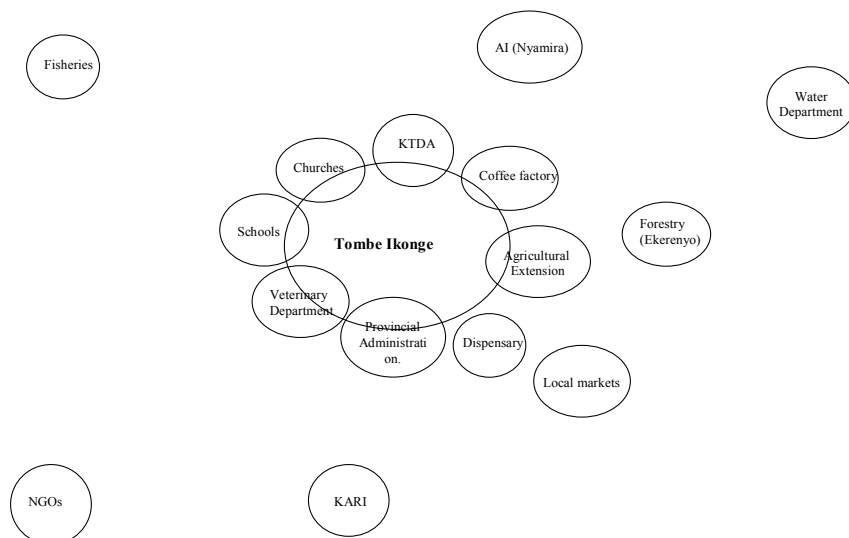
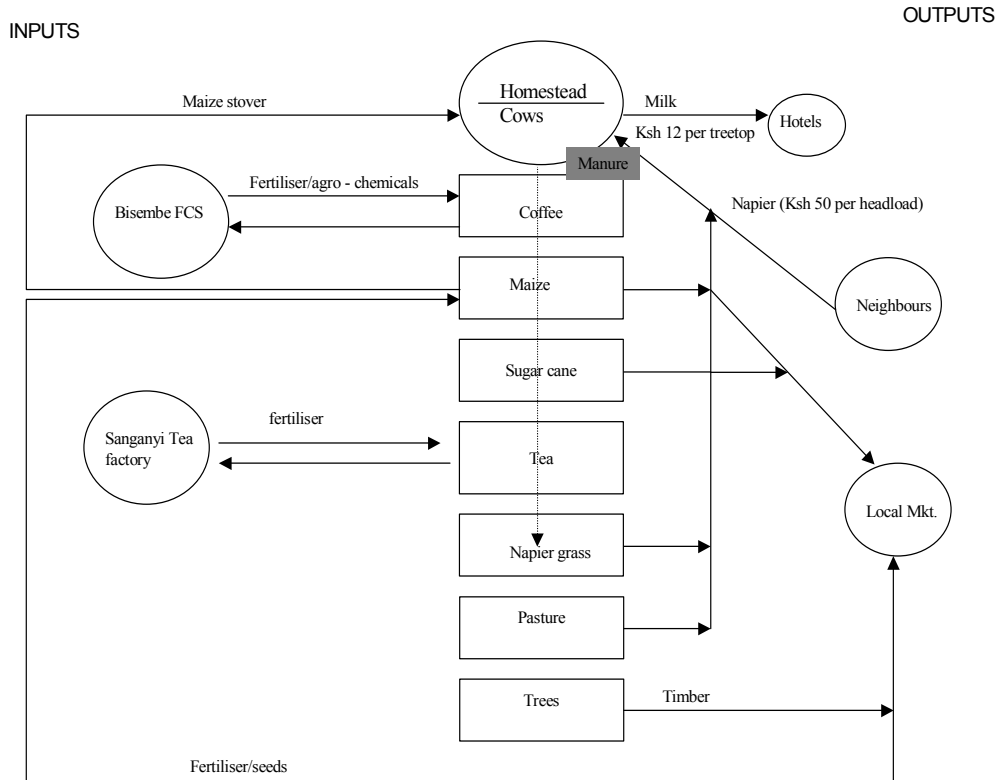
**Figure 8 Farm and community resource maps for Kojwang'/Katunde, Rachuonyo district**



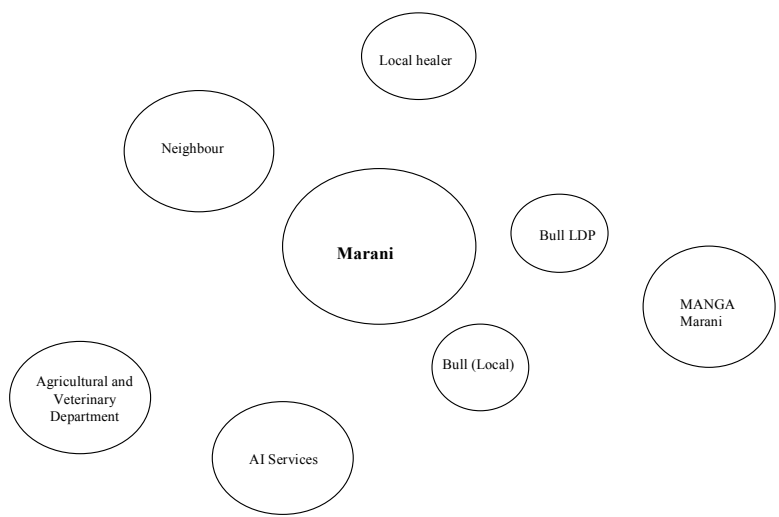
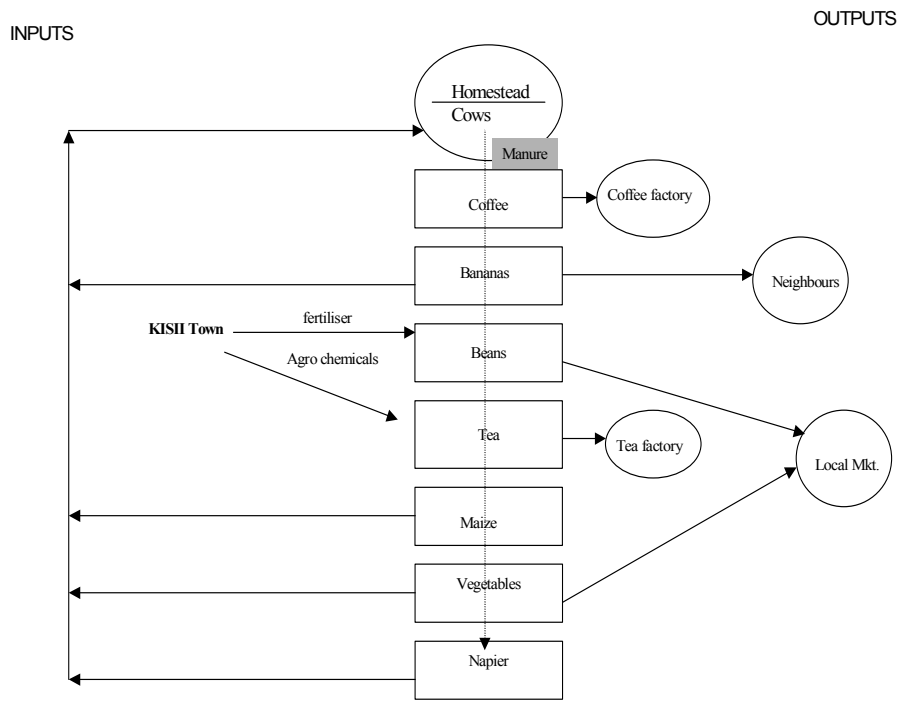
**Figure 9 Farm and community resource maps for Bokiamburi, Nyamira district**



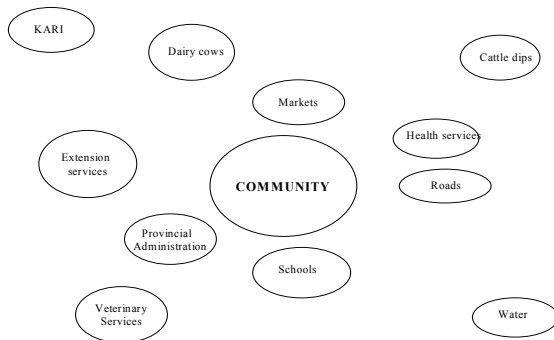
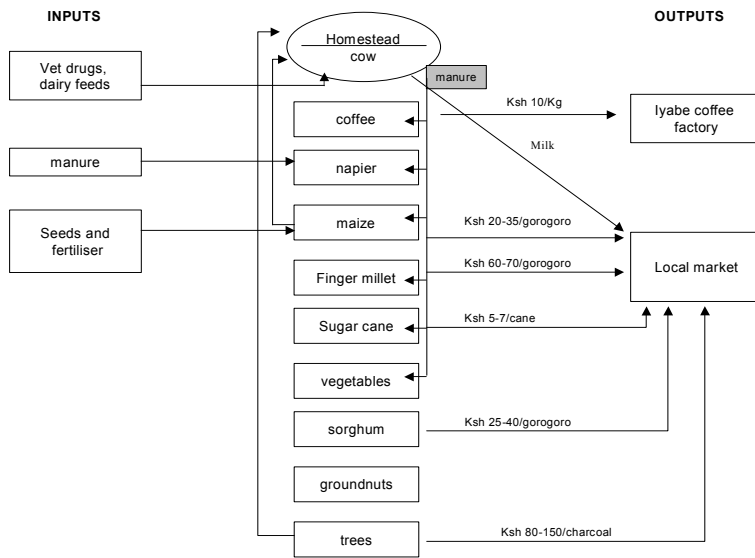
**Figure 10 Farm and community resource maps for Ekerenyo, Nyamira district**



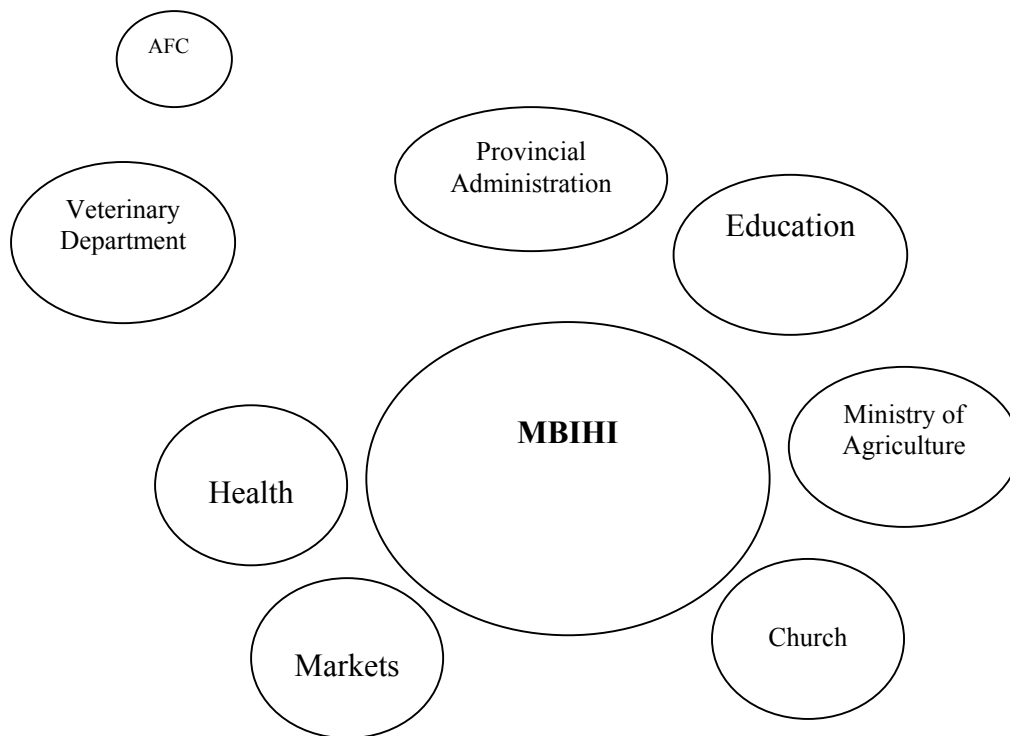
**Figure 11 Farm and community resource maps for Marani, Kisii district**



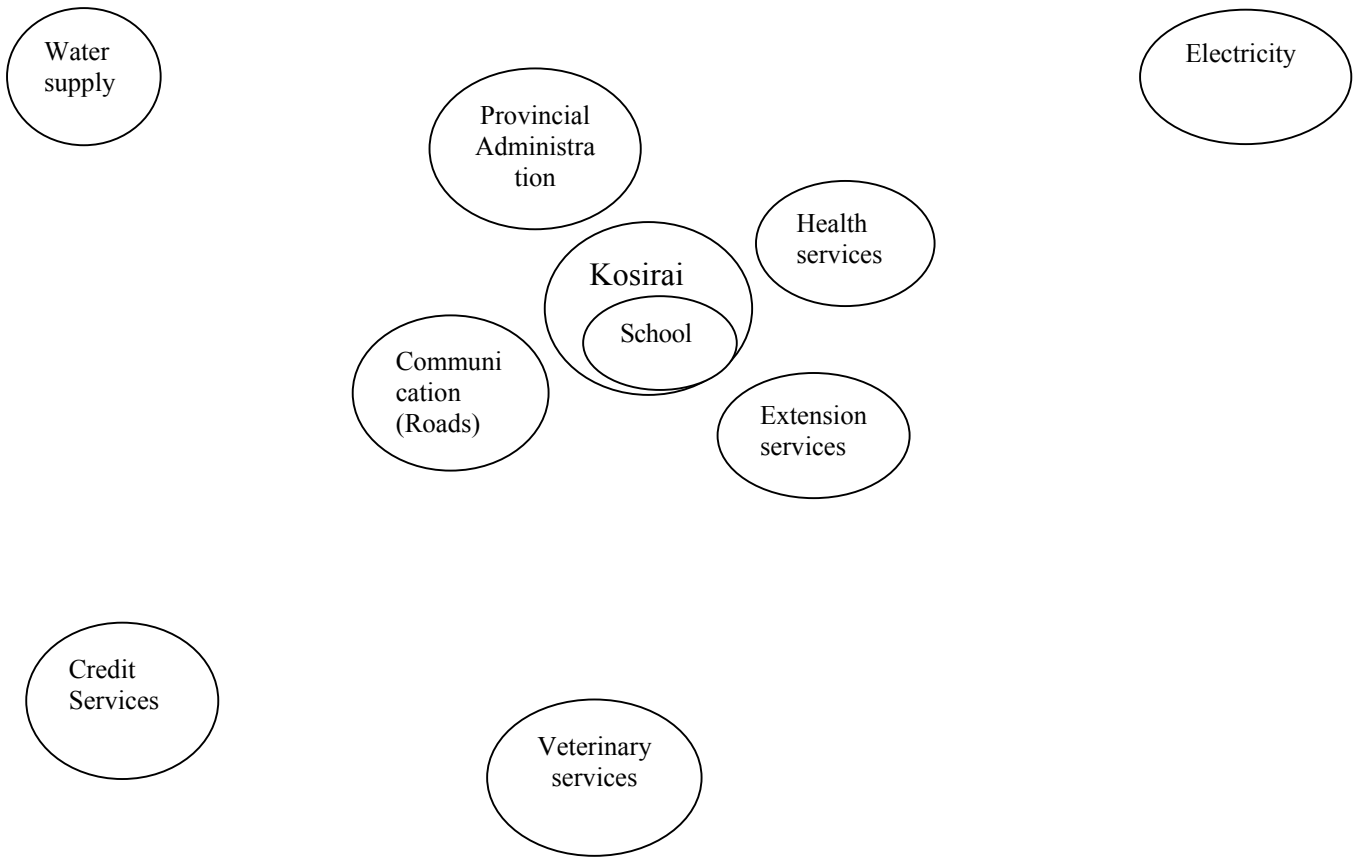
**Figure 12 Farm and community resource maps for Suneka, Kisii district**



**Figure 13 Community resource map for Mbihi, Vihiga District**

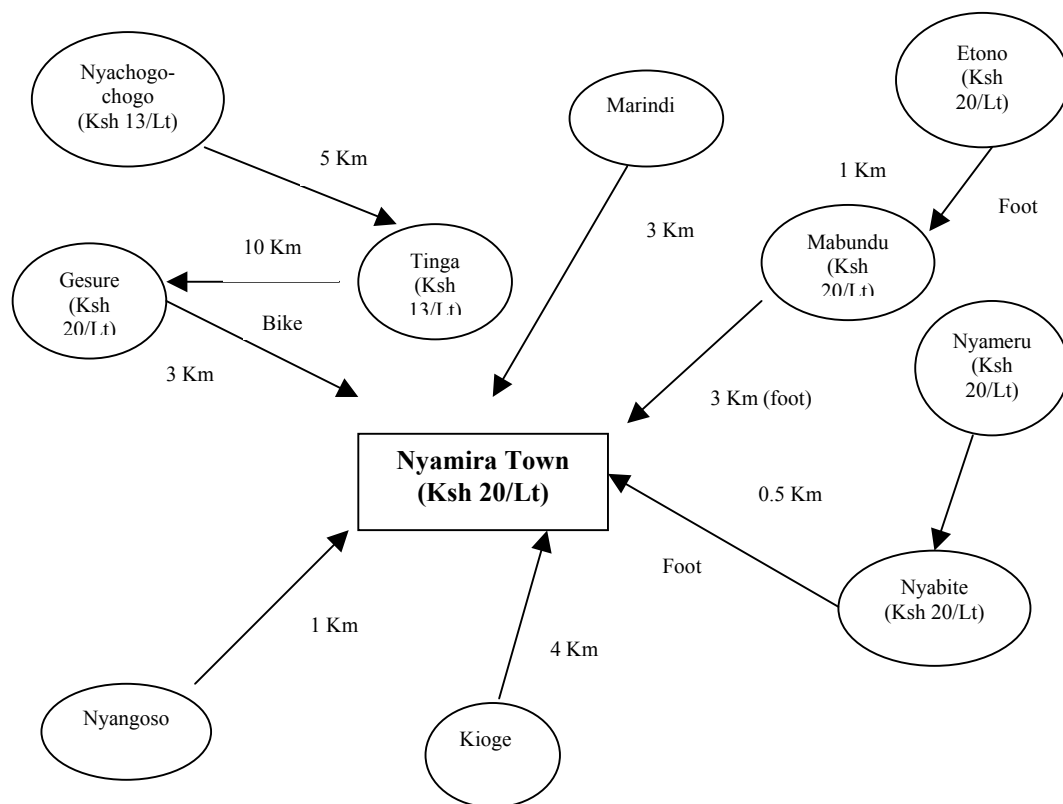


**Figure 14 Community resource map for Kilibwoni, Nandi District**

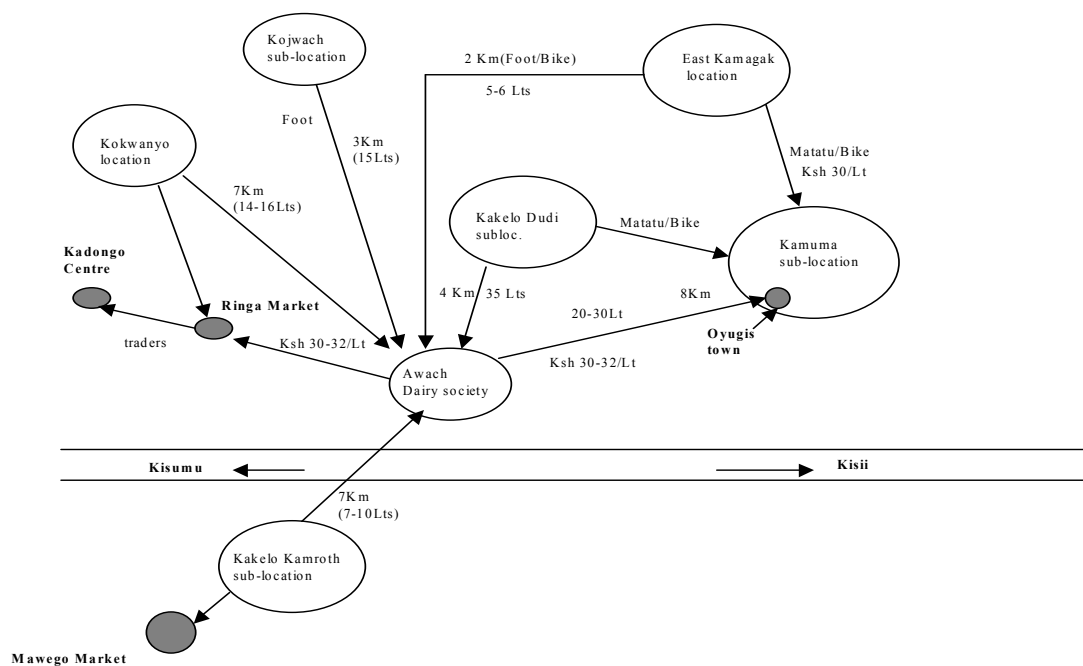


## Annex 3 Milk flows to towns

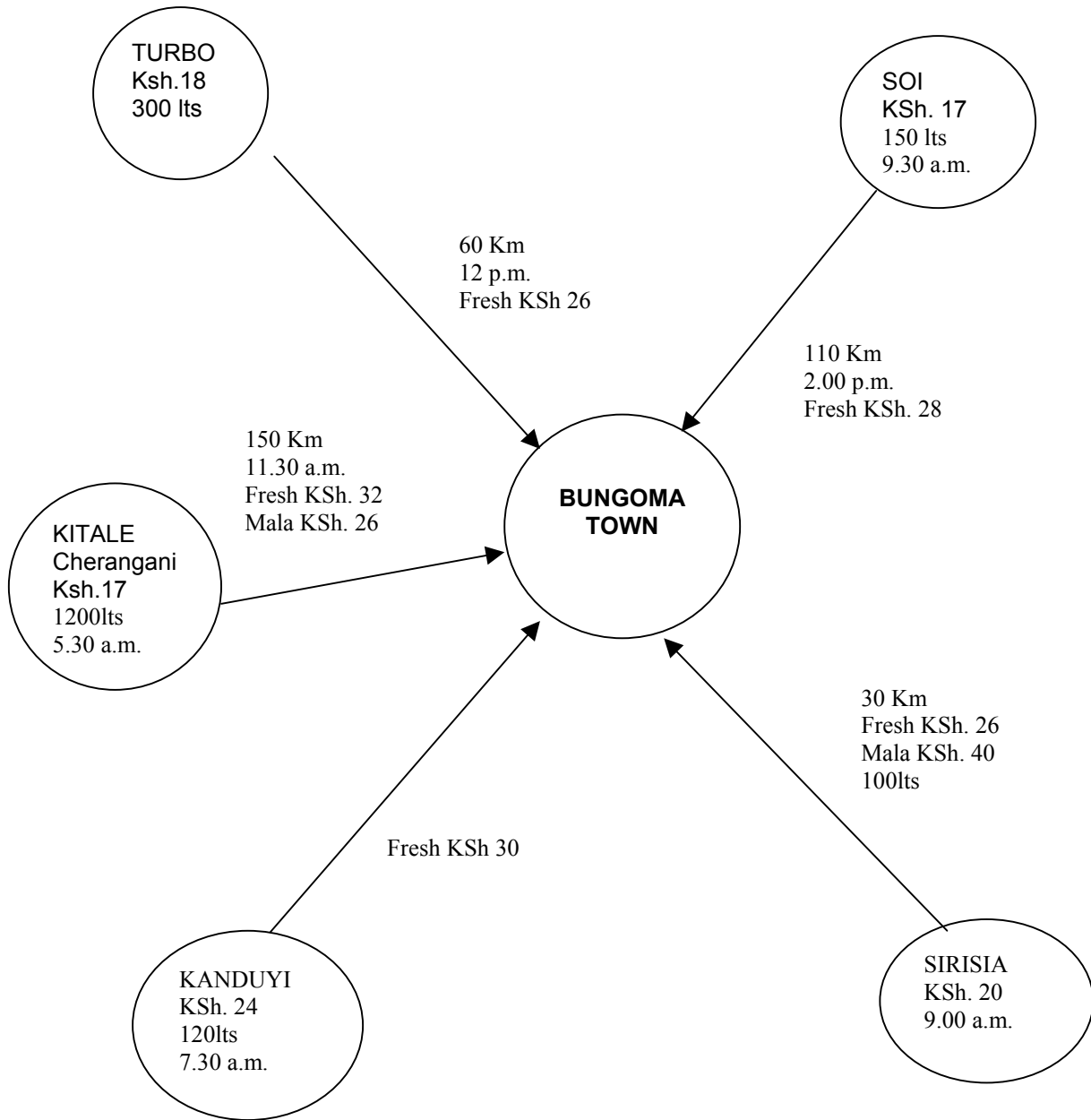
Figure 15 Milk flow and prices to Nyamira town and Oyugis town



Milk Purchase, sales areas and quantity flows in Kamuma sub-location, Rachuonyo district



**Figure 16 Milk flow and prices in Bungoma district**



## Annex 4. Typical farm layouts - current and past

Figure 17 Typical current farm layout in Suneka, Kisii district

|                        |                      |                           |                       |
|------------------------|----------------------|---------------------------|-----------------------|
| Homestead (1/2 acre)   |                      | Grazing ground (1/4 acre) | Tomatoes (1/8 acre)   |
| Trees (1/8 acres)      |                      |                           | Cattle shed           |
| Tea (1/4 acre)         | Maize/Beans (1 acre) | Sugar cane (1/2 acre)     |                       |
| Ground nuts (1/4 acre) |                      |                           | Vegetables (1/4 acre) |
| Sweet potatoes/cassava | Bananas (1/4 acre)   |                           |                       |

Figure 18 Typical farm layout in 1980s in Suneka, Kisii district

|                         |                          |                         |                        |
|-------------------------|--------------------------|-------------------------|------------------------|
| Homestead (2 acre)      |                          | Grazing ground (2 acre) | Sugar Cane (4.5 acres) |
| Coffee (1.5 acre)       | Maize/Beans (4 acre)     |                         |                        |
| Sorghum (0.2 Acre)      |                          | Ground nuts (1 acre)    | Napier (3 acre)        |
| Sweet potatoes (1 acre) | Finger millet (0.5 acre) | Bananas (2 acre)        |                        |

Figure 19 Typical current farm layout in Bokiamburi, Nyamira district

|                           |                      |                           |                        |
|---------------------------|----------------------|---------------------------|------------------------|
| Homestead (1/4 acre)      |                      | Grazing ground (1/8 acre) | Coffee (1/4 acre)      |
| Tea (1/2 acre)            | Maize/Beans (1 acre) |                           | Sugar cane             |
| Bananas (1/2 acre)        |                      | Ground nuts (1/8 acre)    | Napier (1/4 acre)      |
| Sweet potatoes (1/8 acre) | Trees (1/8 acre)     | Finger millet (1/4 acre)  | Vegetables (1/16 acre) |

**Figure 20 Typical farm layout in 1980s in Bokiamburi, Nyamira district**

|                           |                          |                           |                   |
|---------------------------|--------------------------|---------------------------|-------------------|
| Homestead (3/4 acre)      |                          | Grazing ground (1/2 acre) | Coffee (1/2 acre) |
| Trees (1/8 acre)          |                          |                           | Tea (1 acre)      |
| Bananas (1/4 acre)        | Maize/Beans (1 acre)     | Pyrethrum                 |                   |
| Sweet potatoes (1/4 acre) |                          | Ground nuts (1/2 acre)    | Napier (1/4 acre) |
| Irish potatoes (1/4 acre) |                          |                           |                   |
| Sugar cane- (1/4 acre)    | Finger millet (1/2 acre) | Vegetables (1/2 acre)     |                   |

**Figure 21 Typical current farm layout in Kojwang/ Katunde, Rachuonyo district**

|  |                      |                           |                       |
|--|----------------------|---------------------------|-----------------------|
| Homestead (1/2 acre) (inclusive of fruits/trees) |                      | Grazing ground (1/2 acre) | Fallow                |
| Cotton (1 acre)                                  | Maize/Beans (1 acre) |                           | Sugar cane            |
| Sorghum (Var: Seredo/Serina/Gopari/Ochuti)       |                      | Ground nuts (1/2 acre)    | Napier (1/4 acre)     |
| Sweet potatoes/cassava                           | Tobacco (1/2 acre)   | Finger millet (1/8 acre)  | Vegetables (1/4 acre) |

**Figure 22 Typical farm layout in 1980s in Kojwang/Katunde, Rachuonyo district**

|  |                          |                           |                   |
|--|--------------------------|---------------------------|-------------------|
| Homestead (1/2 acre) (inclusive of fruits/trees) |                          | Grazing ground (1/2 acre) | Fallow            |
| Cotton (2 acre)                                  | Maize/Beans (1 acre)     |                           |                   |
| Sorghum (Seredo/Serina/Gopari/Ochuti) (1 Acre)   |                          | Groundnuts (1/2 acre)     | Napier (1/4 acre) |
| Sweet potatoes (1/4 acre)                        | Finger millet (1/4 acre) | Vegetables (1/2 acre)     |                   |